

PARTS LIST

**MODEL 3000
TWO STAGE
INDUSTRIAL
AIR COMPRESSOR**



A series of horizontal lines for writing, consisting of 20 evenly spaced lines across the page.

GENERAL INFORMATION

This manual contains an illustrated breakdown of the unit into assemblies, subassemblies and detail parts required for maintenance and repair. Please retain this manual for reference.

COLUMNS

Each parts list is divided into the following columns:

Reference Number. This column lists the figure number for the illustration, followed by the call-out number on the illustration which identifies that item. For example, figure number 3, item number 5 would be written as 3-5 in this column. The reference number is usually not required for ordering parts or kits.

The following abbreviations might appear in the Reference Number column:

- NI = Not Illustrated.
- Ref = Reference Only. You may be referred to a figure and page noted in the Description column.

Additional abbreviations or symbols used are defined below the parts list.

Description. The description column identifies items by standard name (nomenclature) and modifiers. The modifiers are used to identify specific characteristics (dimensions, capacity, pressure setting, etc.), and/or the particular location or function on the unit. The relationship of a subassembly or component part to higher assemblies is shown by indentation and "bullet" (•) symbols. Assemblies which are broken down in separate lists and illustrations show the appropriate figure number and page reference after the item description. Always provide the part description when ordering.

REF. NO.	PART NO.	DESCRIPTION	QTY.	SPARES
				1 2 3
3-1	95344651	PLUG PIPE - HEX HEAD 1/2"	1	
3-2	95040009	WIPPLE LONG - 1/2" X 2"	1	
3-3	33173061	COUPLING PIPE - 1/2"	1	
3-4	30281655	PLUG OIL FILLER COMPLETE	1	
•	95018148	• O-RING	1	1 2
3-4	32200635	DECAL HAND TIGHTEN	1	
3-7	95227302	CAPSCREW - HEX 5/16-18 X 7/8"	5	
3-8	95073684	CAPSCREW - HEX 5/16-18 X 1-1/4"	1	
3-9	95874851	GASKET - COPPER WASHER	1	
3-10	17127107	COVER FRAME END	1	
3-11	09286226	GASKET FRAME END COVER	•	1 1 2
3-12	95077760	NUT - HEX 1/2-13	1	
3-13	95716880	LOCKWASHER SPRING - 1/2"	1	
3-14	95053692	CAPSCREW - HEX 1/2-13 X 3-1/2"	1	
3-16	30212905	WHEEL V-BELT	1	
3-18	37001389	VALVE PILOT	1	1 1
3-17	37001387	PIN ASSEMBLY THRUST	1	1 1 2
3-18	95073689	LOCKWASHER 1/2 GA X 5"	1	
3-19	95044111	CAPSCREW - HEX 1/4-20 X 3/4"	2	
3-20	95073689	LOCKWASHER 1/2 GA X 5"	1	

Quantity. Quantities listed in this column reflect the number of each item used in the next higher assembly, and are not necessarily the total quantity of the part used on the unit. Specify the desired quantity when ordering.

Part Number. Items listed in this column bear Ingersoll-Rand part numbers. Specify the part number when ordering spare or replacement parts.

The following abbreviations or symbols might appear in the Part Number column:

- NSS = Not Sold Separately. Such items must be ordered as part of the next higher assembly or, where applicable, as part of a Step Saver Kit.
- ** = Part number will vary.

Additional abbreviations or symbols used are defined below the applicable parts list.

Spares. Quantities under this heading reflect the number of each item which we recommend be kept on hand for maintenance or repair. The appropriate quantity for your application will depend on how critical interruptions in service are to your operation.

Class	Quantity	Suggested for
1	Minimum	Domestic service where interruptions in service are acceptable.
2	Average	Domestic service where some interruptions in service are acceptable.
3	Maximum	Export service or for domestic service where interruptions in service are unacceptable.

STEP SAVER KITS

Step Saver Kits for this unit are listed in this manual. These kits provide all of the parts required to perform common repair or scheduled maintenance tasks, such as piston ring replacement or valve replacement. When ordering the kits, use the description and part number as shown.

Kit	Contents
Valve/Gasket	Valve wearing parts and head gaskets that are destroyed in replacing valve parts.
Ring/Gasket	Complete set of piston rings, a crankshaft seal, and gaskets that are destroyed in breaking the unit down to replace the rings.
Bearing/Connecting Rod	Set of connecting rods, main bearings, and a crankpin bushing.

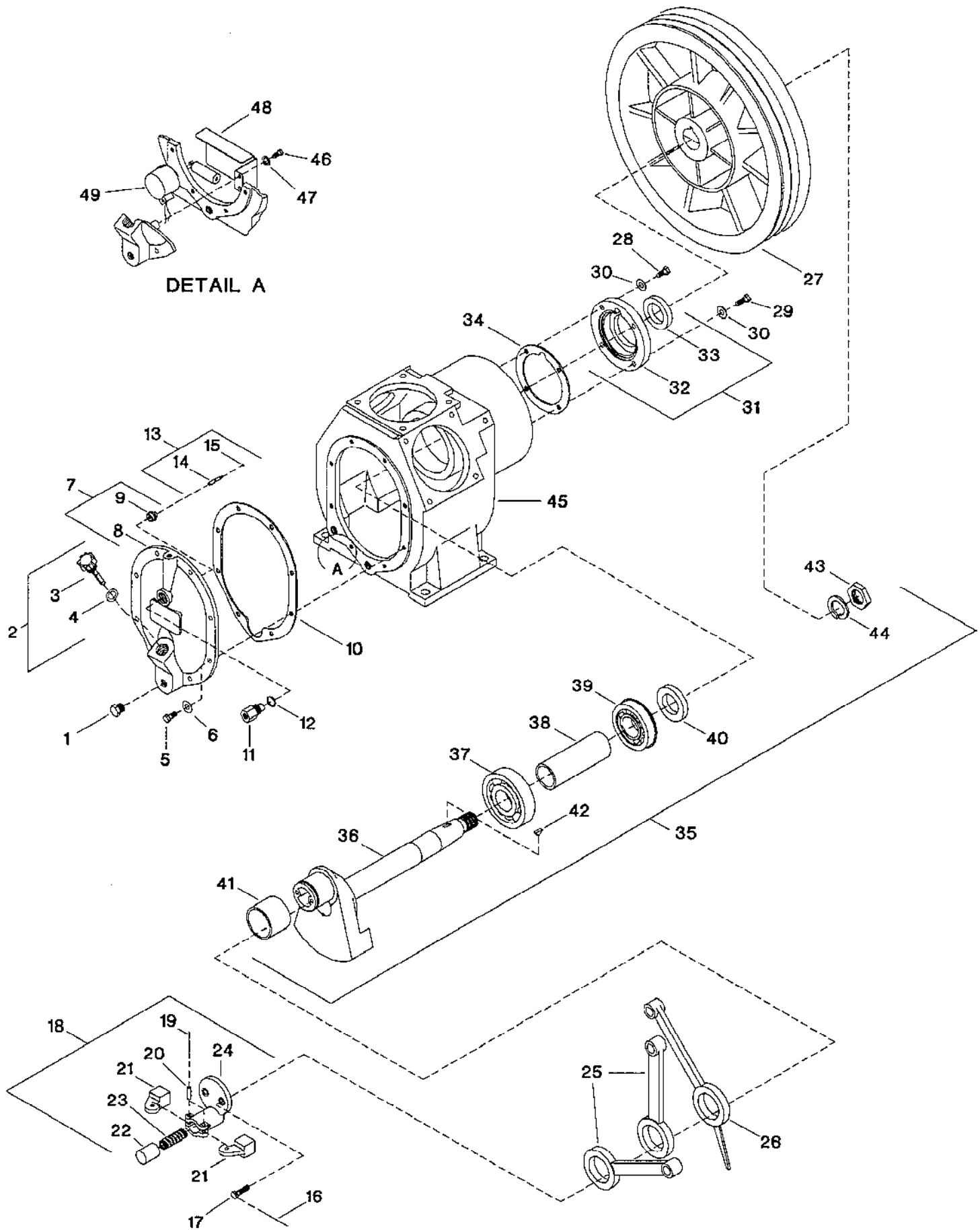
ORDERING INSTRUCTIONS

All parts listed in this manual can be ordered through your local Ingersoll-Rand Air Center or Distributor. Consult the Directory of Distributors included with the unit to find the Air Center or Distributor in your area.

When ordering, provide the following information:

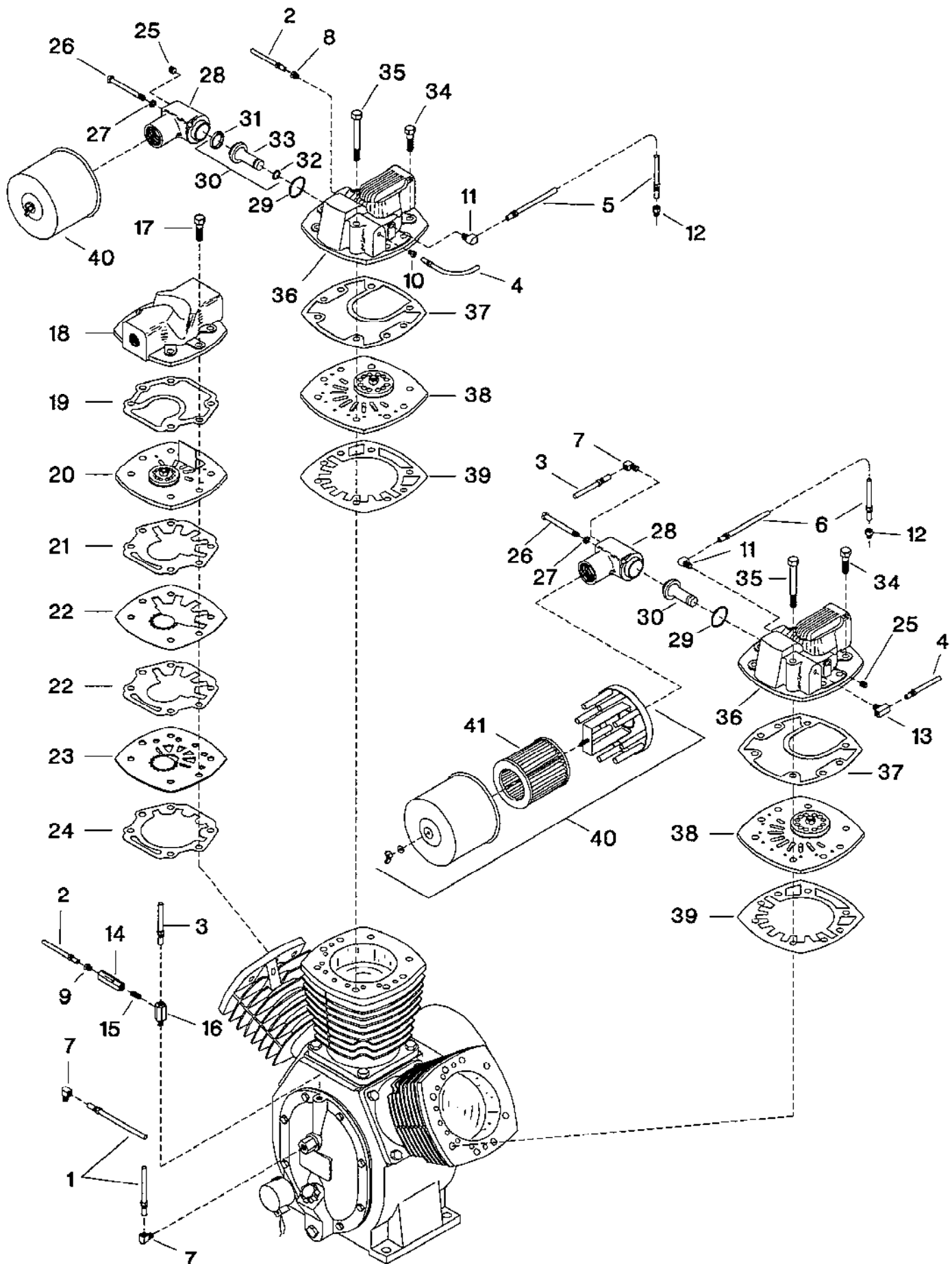
- The **model number** and **serial number** stamped on the unit nameplate.
- The **form number** of this manual, as indicated in the lower right-hand corner of the front cover.
- The **quantity**, **description**, and **part number** of the part(s) you are ordering.

FIGURE 1. COMPRESSOR FRAME ASSEMBLY.



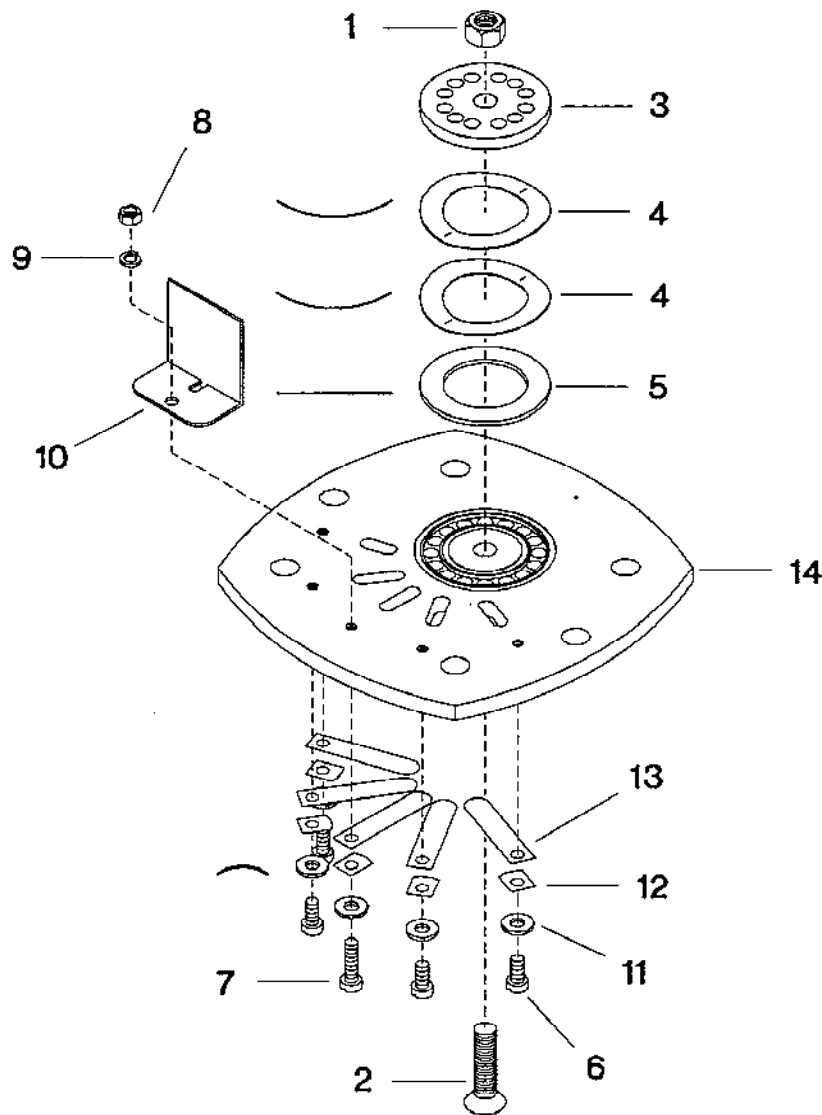
REF. NO.	PART NO.	DESCRIPTION	QTY.	SPARES		
				1	2	3
1-1	95344651	PLUG, OIL DRAIN	1			
1-2	30289003	PLUG, OIL FILL - COMPLETE	1			
1-3	NSS	• PLUG, OIL FILL	1			
1-4	95022158	• O-RING, OIL FILL PLUG	1	1	1	2
1-5	95035333	CAPSCREW, HEX - 3/8-16 X 1"	8			
1-6	95674677	WASHER, COPPER - 3/8"	8			
1-7	37128089	ASSEMBLY, FRAME END COVER	1			
1-8	NSS	• COVER, FRAME END	1			
1-9	37128261	• BUSHING, PILOT VALVE	1			
1-10	30439285	GASKET, FRAME END COVER	1	1	1	2
1-11	37113701	VALVE, PILOT	1		1	1
1-12	30346597	WASHER, COPPER	1			
1-13	32218406	ASSEMBLY, THRUST PIN	1			
1-14	NSS	• PIN, THRUST	1			
1-15	95022695	• O-RING	1	1	1	2
1-16	90799289	LOCKWIRE - 12 GA X 5"	1			
1-17	95101929	CAPSCREW - HEX 3/8-16 X 1"	2			
1-18	30290936	ASSEMBLY, CRANKPIN CAP - CENTRIFUGAL UNLOADER	1			
1-19	90799271	• LOCKWIRE - 12 GA X 5"	1			
1-20	30214951	• PIN, CENTRIFUGAL UNLOADER WEIGHT	2			
1-21	30220875	• WEIGHT, CENTRIFUGAL UNLOADER	2			
1-22	30285688	• PLUNGER, CENTRIFUGAL UNLOADER	1			
1-23	30672281	• SPRING, CENTRIFUGAL UNLOADER	1			1
1-24	30210322	• BODY, CRANKPIN CAP	1			
1-25	32003659	ROD, CONNECTING - FIRST STAGE (LOW PRESSURE)	2		2	2
1-26	32003642	ROD, CONNECTING - SECOND STAGE (HIGH PRESSURE)	1		1	1
1-27	32177180	BELTWHEEL	1			
1-28	95035333	CAPSCREW - HEX 3/8-16 X 1"	2			
1-29	95043766	CAPSCREW - HEX 3/8-16 X 1-1/4"	2			
1-30	95674677	WASHER, COPPER - 3/8"	4			
1-31	32499881	ASSEMBLY, CRANKSHAFT END COVER	1			
1-32	NSS	• COVER, CRANKSHAFT END	1			
1-33	32498958	• SEAL, OIL	1		1	2
1-34	30294961	GASKET, CRANKSHAFT END COVER	1	1	1	2
1-35	32310054	ASSEMBLY, CRANKSHAFT - COMPLETE	1			
1-36	NSS	• ASSEMBLY, DISC AND CRANKSHAFT	1			
1-37	32295701	• BEARING, BALL	1			
1-38	30218457	• SPACER, MAIN BEARING	1			
1-39	95305645	• BEARING, BALL - WITH SNAP RING	1			
1-40	30216824	• RING, BEARING RETAINER	1			
1-41	32295875	• BUSHING, CRANKPIN	1			
1-42	95083721	• KEY, WOODRUFF	1			
1-43	30287668	• NUT, BELTWHEEL	1			
1-44	95265690	• LOCKWASHER, SPRING - 1-3/8"	1			
1-45	32270621	FRAME, COMPRESSOR	1			
DETAIL A - LOW OIL LEVEL SWITCH						
1-46	95053070	CAPSCREW - HEX 1/4-20 X 1/2"	2			
1-47	95043196	LOCKWASHER, SPRING - 1/4"	2			
1-48	32304347	BAFFLE, LOW OIL LEVEL SWITCH	1			
1-49	32201527	SWITCH, LOW OIL LEVEL - NEMA 1	1			

FIGURE 2. MODEL 3000 BARE COMPRESSOR.



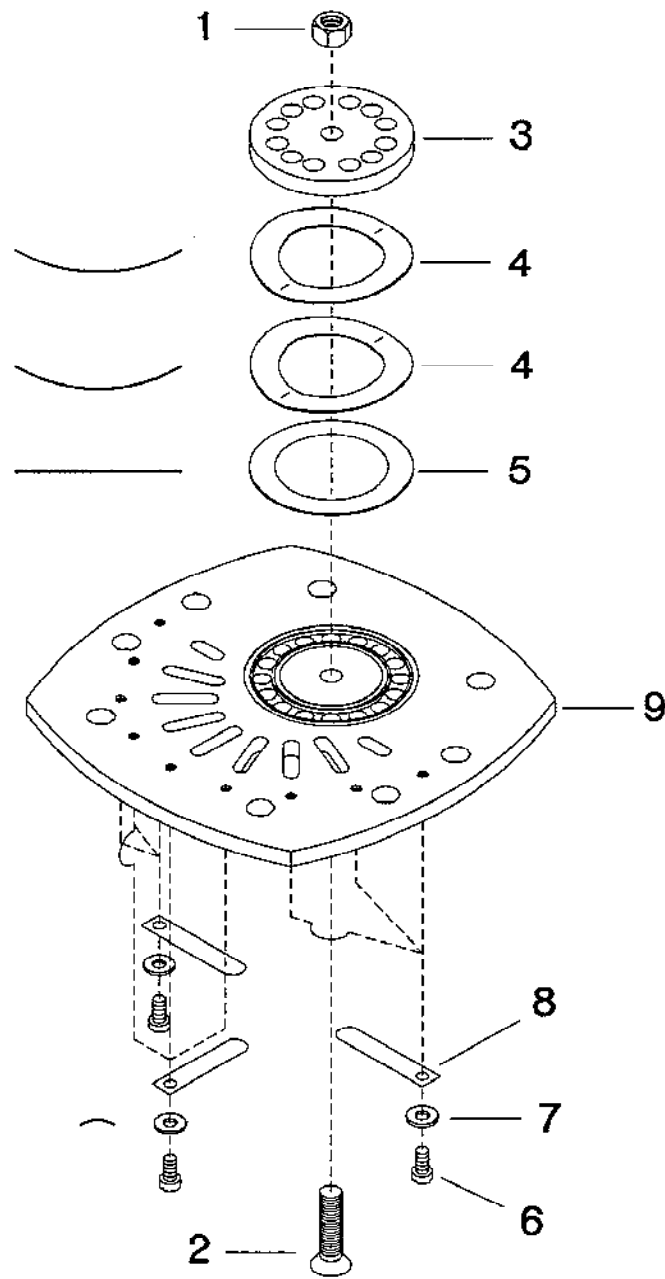
REF. NO.	PART NO.	DESCRIPTION	QTY.	SPARES		
				1	2	3
2-1	32172751	ASSEMBLY, TUBE - PILOT VALVE/INTERCOOLER - 5/16" DIAMETER	1			
2-2	32200503	ASSEMBLY, TUBE - CHECK VALVE/CENTER HEAD - 5/16" DIAMETER	1			
2-3	32203432	ASSEMBLY, TUBE - CHECK VALVE/RIGHT-HAND HEAD - 5/16" DIAMETER	1			
2-4	32183303	ASSEMBLY, TUBE - CENTER HEAD/TEE - 5/16" DIAMETER	1			
2-5	32176695	ASSEMBLY, TUBE - BREATHER/CENTER HEAD - 3/8" DIAMETER	1			
2-6	32172777	ASSEMBLY, TUBE - BREATHER/RIGHT-HAND HEAD - 3/8" DIAMETER	1			
2-7	95110441	ELBOW, TUBE - 5/16 X 1/4"	3			
2-8	32157554	CONNECTOR, MALE - 5/16 X 1/4"	1			
2-9	95082483	CONNECTOR, TUBE - 5/16 X 1/8"	1			
2-10	37144508	ORIFICE, CONNECTOR - TUBE	1			
2-11	95040143	ELBOW, TUBE - 3/8 X 1/4"	2			
2-12	95083143	CONNECTOR, MALE - 3/8 X 1/4"	2			
2-13	32255721	TEE, UNLOADER ORIFICE	1			
2-14	32001141	VALVE, CHECK	1			
2-15	95796017	NIPPLE, CLOSE - 1/8 X 3/4"	1			
2-16	32203242	CONNECTOR, TUBE - 5/16 X 1/4" MALE LONG	1			
2-17	95104196	CAPSCREW, HEX - 1/2-13 X 2"	6			
2-18	32172199	HEAD, SECOND STAGE (HIGH PRESSURE)	1			
2-19	32252801	GASKET, HEAD - SECOND STAGE	1	1	1	2
2-20	REF.	ASSEMBLY, VALVE PLATE - SECOND STAGE (SEE FIGURE 3)	1		1	1
2-21	32252819	GASKET, SPACER PLATE - SECOND STAGE	2	2	2	4
2-22	32228280	PLATE, SPACER - SECOND STAGE	1			
2-23	32228272	PLATE, DISC - SECOND STAGE	1			
2-24	32252827	GASKET, VALVE PLATE - SECOND STAGE	1	1	1	2
2-25	95252409	PLUG, PIPE - HEX HEAD - 1/4"	2			
2-26	95035259	CAPSCREW, HEX - 5/16-18 X 3-3/4"	4			
2-27	95043188	LOCKWASHER, SPRING - 5/16"	4			
2-28	32174336	COVER, UNLOADER	2			
2-29	95026183	O-RING	2	2	2	4
2-30	32256257	ASSEMBLY, UNLOADER PISTON	2			
2-31	32254740	• SEAL, UNLOADER PISTON	1	2	2	4
2-32	32188385	• O-RING, UNLOADER PISTON	1	2	2	4
2-33	NSS	• PISTON, UNLOADER	1	1	1	2
2-34	95104188	CAPSCREW - HEX 1/2-13 X 1-3/4"	14			
2-35	95104279	CAPSCREW - HEX 1/2-13 X 4-1/4"	2			
2-36	32172207	HEAD, FIRST STAGE (LOW PRESSURE)	2			
2-37	32267502	GASKET, HEAD - FIRST STAGE	2	2	2	4
2-38	REF.	ASSEMBLY, VALVE PLATE - FIRST STAGE (SEE FIGURE 4)	2		1	2
2-39	32267510	GASKET, VALVE PLATE - FIRST STAGE	2	2	2	4
2-40	32109779	FILTER, INLET - COMPLETE	2			
2-41	32012957	• ELEMENT, FILTER - 10 MICRON	2	4	4	4

FIGURE 3. SECOND STAGE (HIGH PRESSURE) VALVE PLATE ASSEMBLY.



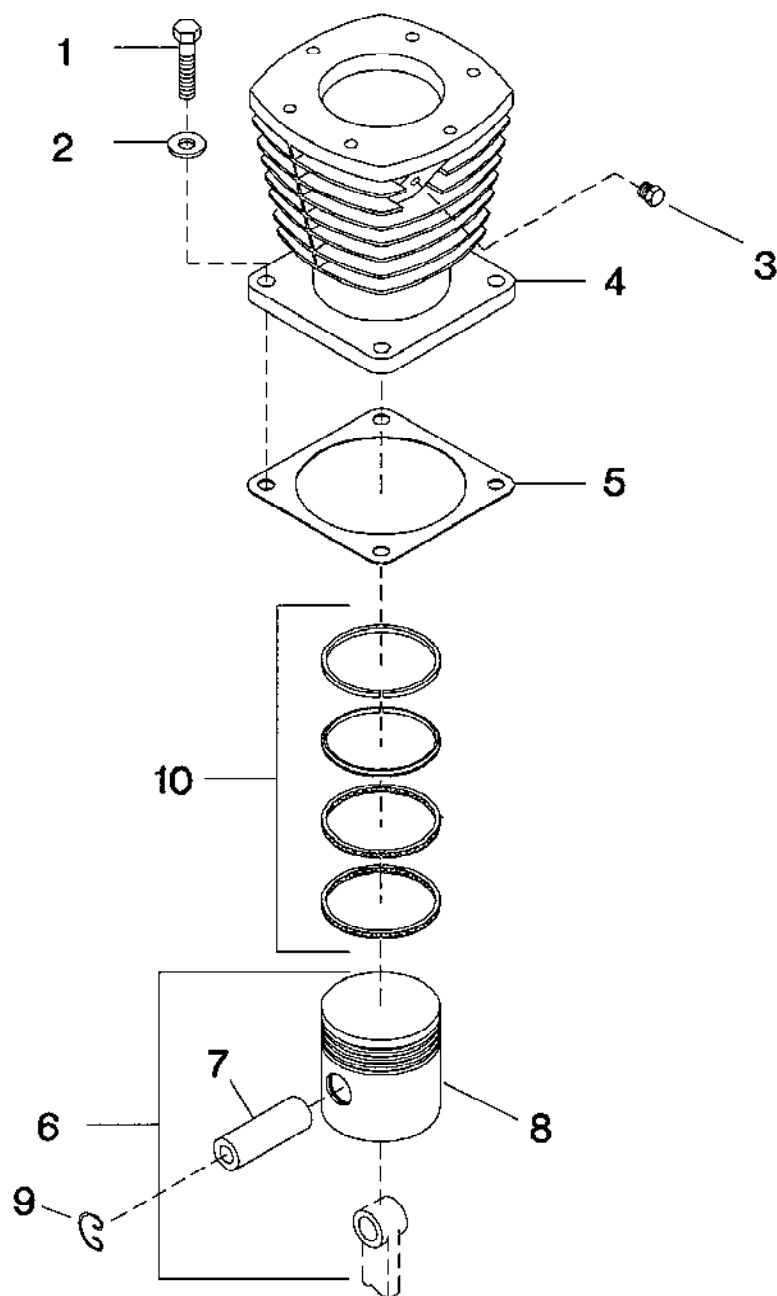
REF. NO.	PART NO.	DESCRIPTION	QTY.	SPARES		
				1	2	3
REF.	32228322	ASSEMBLY, SECOND STAGE VALVE PLATE	1		1	1
3-1	97166946	• NUT, WHIZ-LOCK - 7/16-14 HEX	1	1	1	1
3-2	32223927	• BOLT, VALVE	1	1	1	1
3-3	32228264	• PLATE, STOP - DISCHARGE	1			
3-4	30221394	• SPRING, VALVE - DISCHARGE	2	2	2	2
3-5	30215917	• PLATE, VALVE - DISCHARGE	1	1	1	1
3-6	32035511	• SCREW, FILLISTER HEAD - 1/4-20 X 3/8"	4	4	4	4
3-7	32224008	• SCREW, MACHINE - FILLISTER HEAD - 1/4-20 X 3/4"	1	1	1	1
3-8	95416335	• NUT, HEX - 1/4-20	1	1	1	1
3-9	32035479	• LOCKWASHER, SPRING - 1/4"	1	1	1	1
3-10	32223919	• DIFFUSER, VALVE PLATE	1			
3-11	32217382	• WASHER, BELLEVILLE - 1/4"	5	5	5	5
3-12	32228306	• RETAINER, FINGER VALVE	5	5	5	5
3-13	30220115	• VALVE, FINGER	5	5	5	5
3-14	32228256	• PLATE, VALVE SEAT	1			

FIGURE 4. FIRST STAGE (LOW PRESSURE) VALVE PLATE ASSEMBLY.



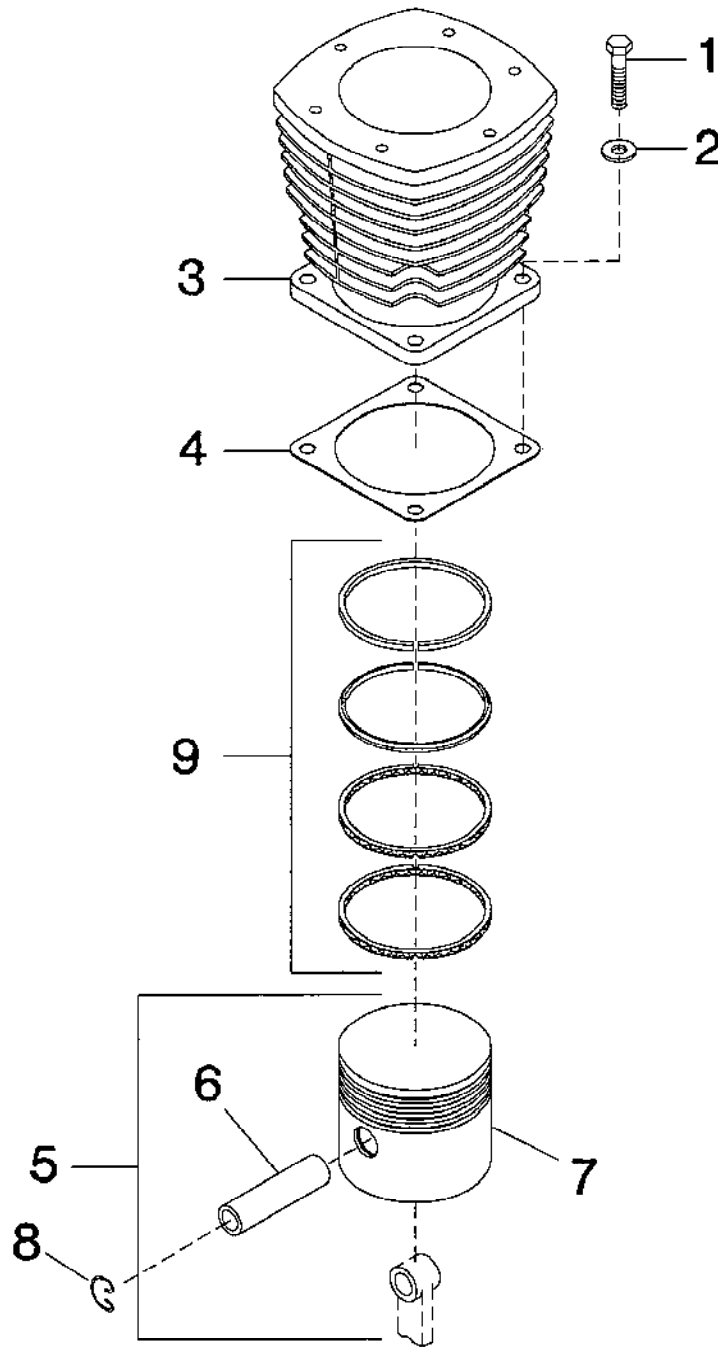
REF. NO.	PART NO.	DESCRIPTION	QTY.	SPARES		
				1	2	3
REF.	32228330	ASSEMBLY, FIRST STAGE VALVE PLATE	2		1	2
4-1	97166946	• NUT, WHIZ-LOCK - 7/16-14 HEX	1	1	2	2
4-2	32223927	• BOLT, VALVE	1	1	2	2
4-3	32228314	• PLATE, STOP - DISCHARGE	1			
4-4	30221501	• SPRING, VALVE - DISCHARGE	2	2	4	4
4-5	30181499	• PLATE, VALVE - DISCHARGE	1	1	2	2
4-6	32035511	• SCREW, FILLISTER HEAD - 1/4-20 X 3/8"	9	9	9	18
4-7	32217382	• WASHER, BELLEVILLE - 1/4"	9	9	9	18
4-8	30220115	• VALVE, FINGER	9	9	9	18
4-9	32228249	• PLATE, VALVE SEAT	1			

FIGURE 5. SECOND STAGE (HIGH PRESSURE) CYLINDER & PISTON.



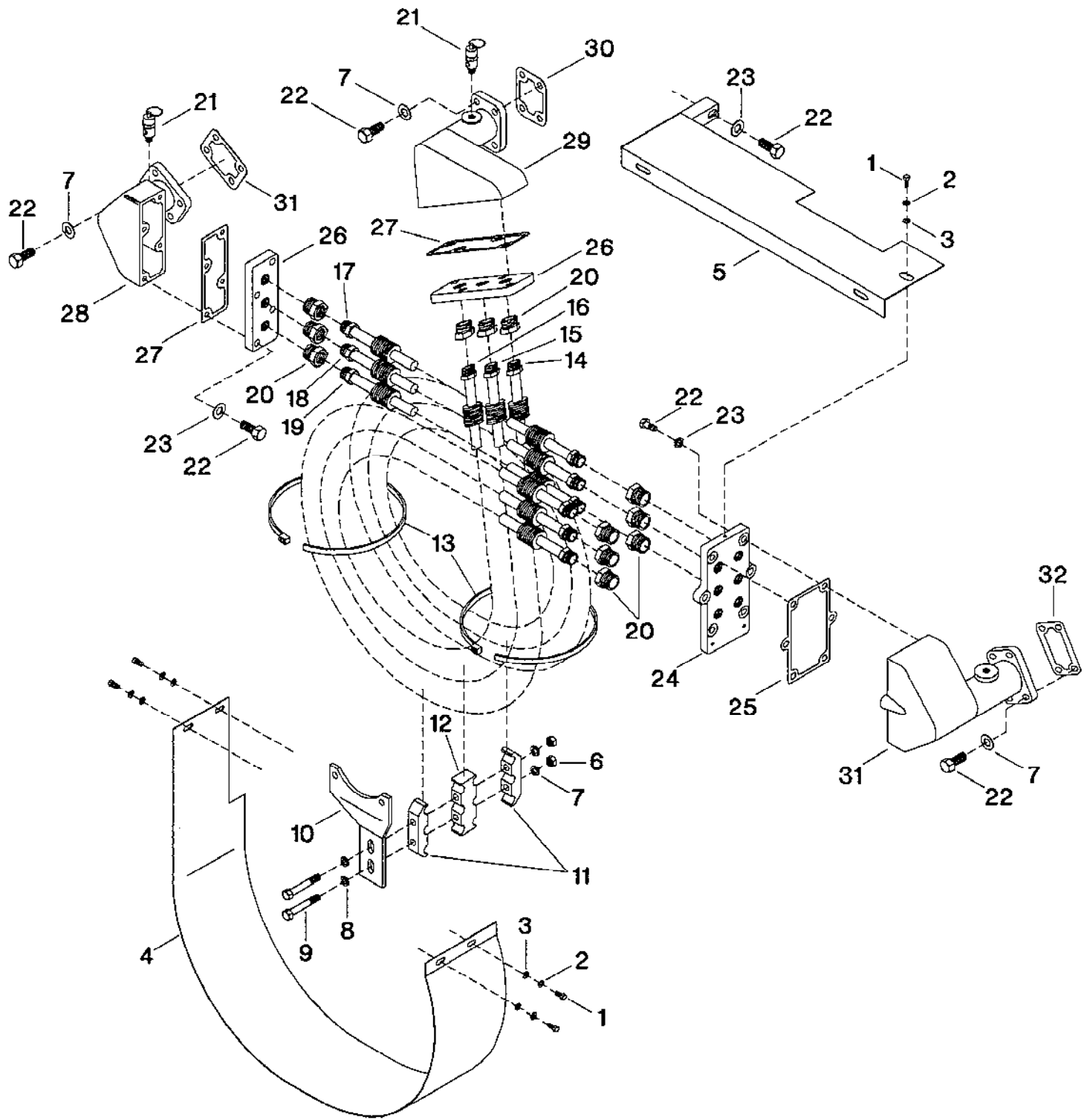
REF. NO.	PART NO.	DESCRIPTION	QTY.	SPARES		
				1	2	3
5-1	95053567	CAPSCREW, HEX HEAD - 1/2-13 X 1-1/4"	4			
5-2	95674701	WASHER, COPPER - 1/2"	4			
5-3	95252409	PLUG, PIPE - HEX HEAD - 1/4"	1			
5-4	32172165	CYLINDER, SECOND STAGE	1			
5-5	30294235	GASKET, FLANGE	1	1	1	2
5-6	32054520	ASSEMBLY, PISTON/PIN - 4"	1		1	1
5-7	37131695	• PIN, PISTON	1			
5-8	NSS	• PISTON - 4"	1			
5-9	30288450	RING, LOCK	2			
5-10	32194151	SET, RING - 4"	1	1	1	2

Figure 6. First Stage (Low Pressure) Cylinder & Piston Assembly.



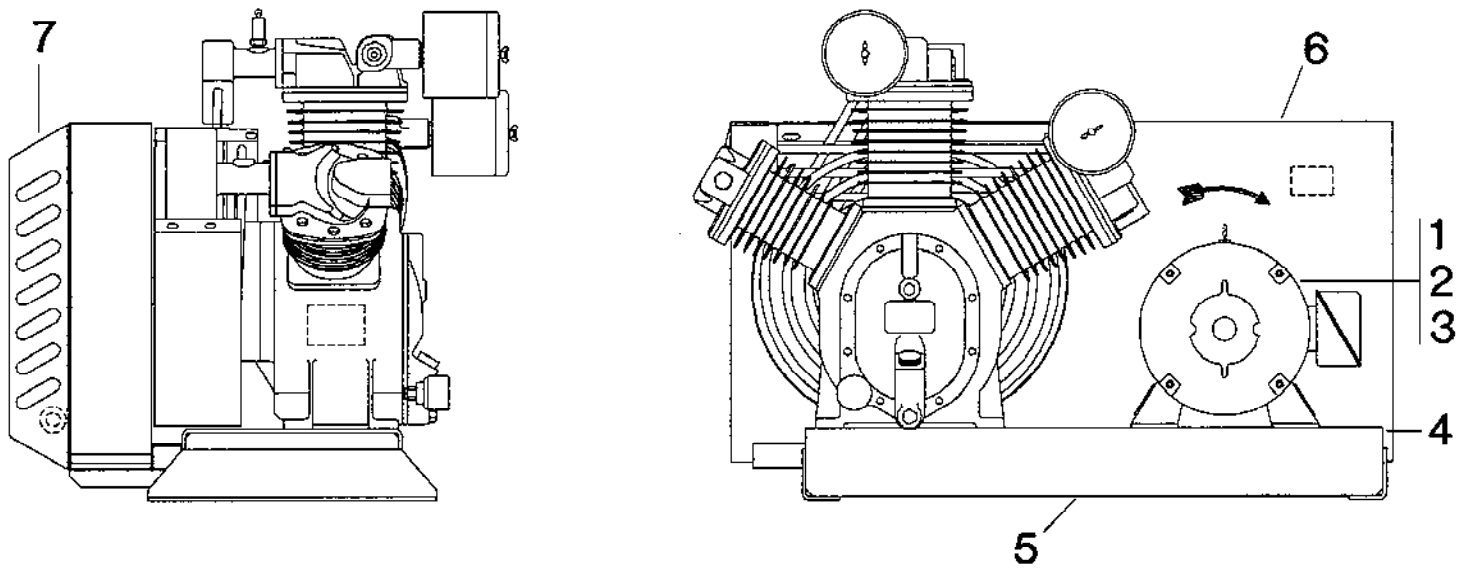
REF. NO.	PART NO.	DESCRIPTION	QTY.	SPARES		
				1	2	3
6-1	95053567	CAPSCREW, HEX HEAD - 1/2-13 X 1-1/4"	8			
6-2	95674701	WASHER, COPPER - 1/2"	8			
6-3	32172157	CYLINDER, FIRST STAGE	2			
6-4	30294235	GASKET, FLANGE	2	2	2	4
6-5	32054512	ASSEMBLY, PISTON/PIN - 5-1/2"	2		2	2
6-6	30288427	• PIN, PISTON	1			
6-7	NSS	• PISTON - 5-1/2"	1			
6-8	30288450	RING, LOCK	2			
6-9	32194144	SET, RING - 5-1/2"	2	2	2	4

FIGURE 7. INTERCOOLER & SHROUD ASSEMBLY.



REF. NO.	PART NO.	DESCRIPTION	QTY.	SPARES		
				1	2	3
7-1	95053070	CAPSCREW, HEX HEAD - 1/4-20 X 1/2"	5			
7-2	95043196	LOCKWASHER, SPRING - 1/4"	5			
7-3	95094298	WASHER, FLAT - 1/4"	5			
7-4	32177693	SHROUD, INTERCOOLER	1			
7-5	32180713	TOP, SHROUD	1			
7-6	95077764	NUT, HEX - 3/8-16	2			
7-7	95081857	LOCKWASHER, SPRING - 3/8"	14			
7-8	95069597	WASHER, FLAT - 3/8"	2			
7-9	95002895	CAPSCREW, HEX HEAD - 3/8-16 X 4"	2			
7-10	32175515	BRACKET, INTERCOOLER	1			
7-11	32165367	CLAMP, INTERCOOLER TUBE - OUTER	2			
7-12	32165383	CLAMP, INTERCOOLER TUBE - CENTER	1			
7-13	95370888	TIE, CABLE	2			
7-14	32197006	ASSEMBLY, INTERCOOLER TUBE - FINNED - #3	1		1	2
7-15	32196990	ASSEMBLY, INTERCOOLER TUBE - FINNED - #2	1		1	2
7-16	32196982	ASSEMBLY, INTERCOOLER TUBE - FINNED - #1	1		1	2
7-17	32196974	ASSEMBLY, INTERCOOLER TUBE - FINNED - #3	1		1	2
7-18	32196966	ASSEMBLY, INTERCOOLER TUBE - FINNED - #2	1		1	2
7-19	32196958	ASSEMBLY, INTERCOOLER TUBE - FINNED - #1	1		1	2
7-20	95083226	CONNECTOR, MALE - 5/8 X 1/2"	12			
7-21	72062185	VALVE, RELIEF - 80 PSIG	2			2
7-22	95079612	CAPSCREW, HEX HEAD - 3/8-16 X 1"	27			
7-23	95081857	LOCKWASHER, SPRING - 3/8"	15			
7-24	32180697	FLANGE, INTERCOOLER - HIGH PRESSURE	1			
7-25	32160566	GASKET, FLANGE - HIGH PRESSURE	1	1	1	2
7-26	32160475	FLANGE, INTERCOOLER - LOW PRESSURE	2			
7-27	32160558	GASKET, FLANGE - LOW PRESSURE	2	2	2	4
7-28	32160491	MANIFOLD, INTERCOOLER - #1 LOW PRESSURE	1			
7-29	32160509	MANIFOLD, INTERCOOLER - #2 LOW PRESSURE	1			
7-30	32153801	GASKET, MANIFOLD - LOW PRESSURE	2	2	2	4
7-31	32164519	MANIFOLD, INTERCOOLER - HIGH PRESSURE	1			
7-32	32153827	GASKET, MANIFOLD - HIGH PRESSURE	1	1	1	2

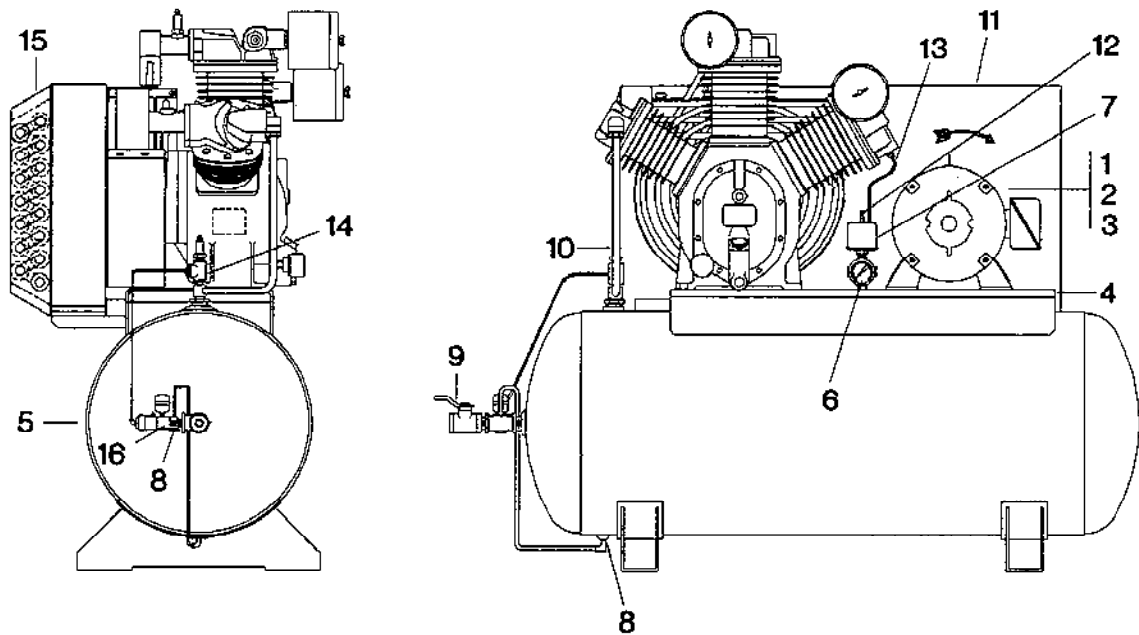
FIGURE 8. TYPICAL BASEPLATE PACKAGE.



REF. NO.	PART NO.	DESCRIPTION	QTY.	SPARES		
				1	2	3
8-1	**	MOTOR, ELECTRIC	1			
8-2	**	PULLEY, MOTOR	1			
8-3	**	BELT	2		2	2
8-4	32203150	TIGHTENER, BELT - COMPLETE	1			
8-5	32123689	ASSEMBLY, SUBBASE	1			
8-6	32252470	BELTGUARD, COMPLETE (FOR UNITS WITHOUT AFTERCOOLER)*	1			
NI	32170797	VALVE, AUXILIARY - DUAL CONTROL - 175 PSIG	1			
NI	32170789	VALVE, AUXILIARY - DUAL CONTROL - 125 PSIG - TEMPERATURE CONTROL UNITS	1			
NI	37005907	SWITCH, PRESSURE - NEMA 1	1	1	1	1
NI	32061368	SWITCH, PRESSURE - NEMA 1 - TEMPERATURE CONTROL UNITS	1	1	1	1
OPTIONAL EQUIPMENT						
8-7	REF.	AFTERCOOLER, AIR COOLED (SEE FIGURE 11)	1			

* FOR UNITS WITH AFTERCOOLER, SEE FIGURE 11.

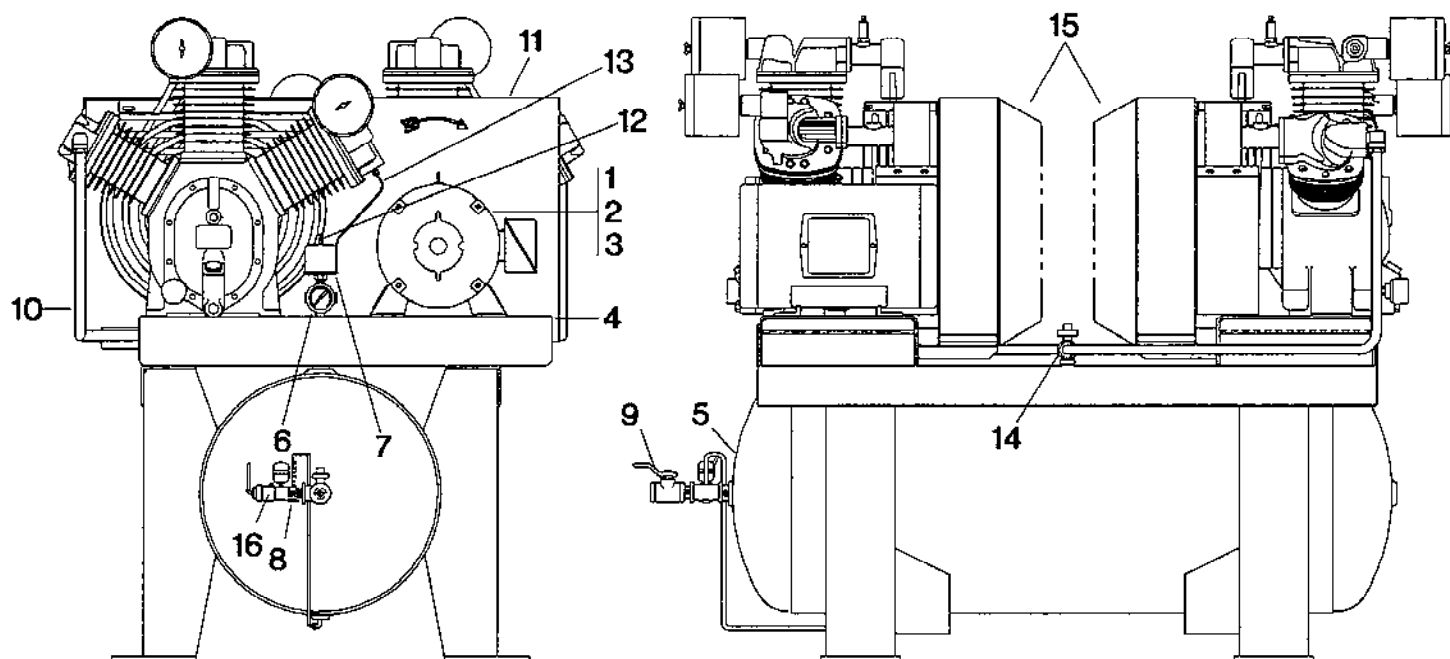
FIGURE 9. TYPICAL SIMPLEX PACKAGE.



REF. NO.	PART NO.	DESCRIPTION	QTY.	SPARES		
				1	2	3
9-1	**	MOTOR, ELECTRIC	1			
9-2	**	PULLEY, MOTOR	1			
9-3	**	BELT	2		2	2
9-4	32203150	TIGHTENER, BELT - COMPLETE	1			
9-5	32198632	ASSEMBLY, RECEIVER - 120 GALLON	1			
9-5	32185126	ASSEMBLY, RECEIVER - 120 GALLON (TEMPERATURE CONTROL)	1			
9-5	32198558	ASSEMBLY, RECEIVER - 240 GALLON	1			
NI	31385693	VALVE, RELIEF - 200 PSIG - RECEIVER	1			1
NI	30812101	VALVE, RELIEF - 110 PSIG - RECEIVER (TEMPERATURE CONTROL)	1			1
9-6	32013872	GAUGE, PRESSURE - 300 PSIG	1	1	1	1
9-7	37005907	SWITCH, PRESSURE - NEMA 1	1	1	1	1
9-7	32061368	SWITCH, PRESSURE - NEMA 1 (TEMPERATURE CONTROL)	1	1	1	1
9-8	32027120	VALVE, MANUAL DRAIN	1			
9-9	32223604	VALVE, BALL - SERVICE	1			1
9-10	32188542	ASSEMBLY, TUBE - COMPRESSOR/120 GALLON RECEIVER	1			
9-10	32190480	ASSEMBLY, TUBE - COMPRESSOR/240 GALLON RECEIVER	1			
9-11	32318305	BELTGUARD, COMPLETE (FOR 120 GAL. RECEIVER UNITS WITHOUT AFTERCOOLER)*	1			
9-11	32252470	BELTGUARD, COMPLETE (FOR 240 GAL. RECEIVER UNITS WITHOUT AFTERCOOLER)*	1			
9-12	32170797	VALVE, AUXILIARY - DUAL CONTROL - 175 PSIG	1			
9-12	32170789	VALVE, AUXILIARY - DUAL CONTROL - 125 PSIG (TEMPERATURE CONTROL)	1			
9-13	32229510	ASSEMBLY, TUBE - AUXILIARY VALVE/UNLOADER	1			
9-14	32174286	VALVE, RELIEF - 325 PSIG - DISCHARGE	1		1	1
OPTIONAL EQUIPMENT						
9-15	REF.	AFTERCOOLER, AIR COOLED (SEE FIGURE 11)	1			
9-16	32310690	VALVE, AUTOMATIC DRAIN	1			

* FOR UNITS WITH AFTERCOOLER, SEE FIGURE 11.

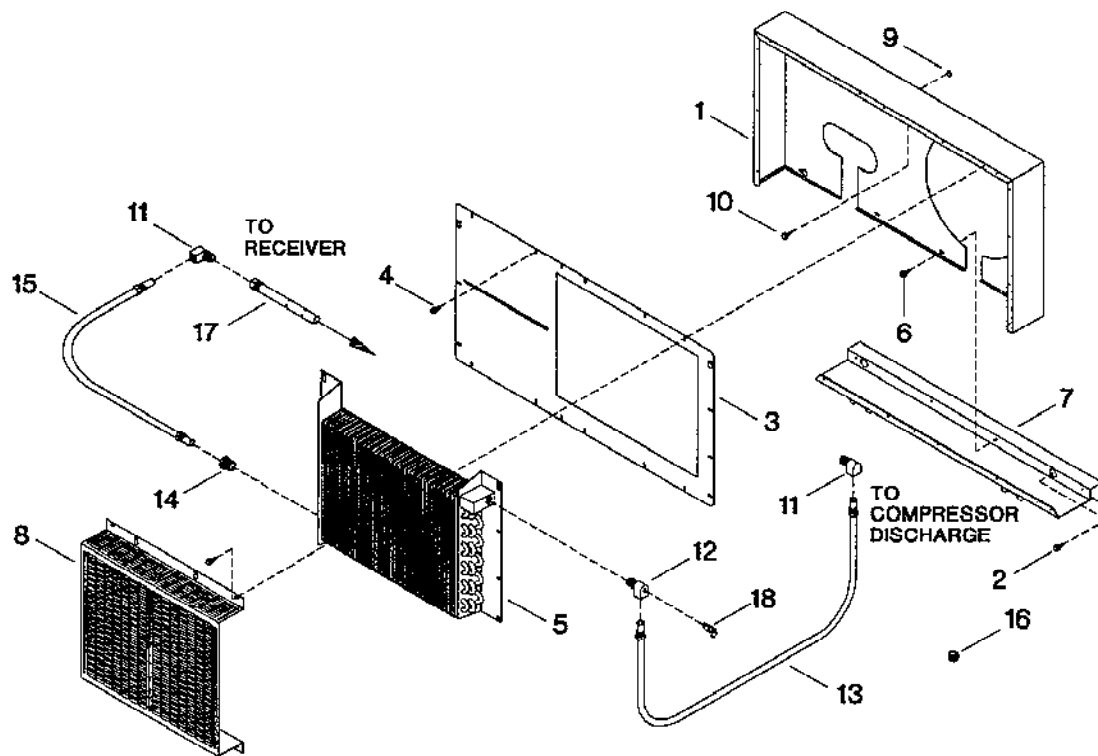
FIGURE 10. TYPICAL DUPLEX PACKAGE.



REF. NO.	PART NO.	DESCRIPTION	QTY.	SPARES		
				1	2	3
10-1	**	MOTOR, ELECTRIC	2			
10-2	**	PULLEY, MOTOR	2			
10-3	**	BELT	4		4	4
10-4	32203150	TIGHTENER, BELT - COMPLETE	2			
10-5	32233249	ASSEMBLY, RECEIVER - 240 GALLON	1			
NI	30357917	VALVE, RELIEF - 200 PSIG - RECEIVER	1			1
NI	30357875	VALVE, RELIEF - 135 PSIG - RECEIVER (TEMPERATURE CONTROL)	1			1
10-6	32013872	GAUGE, PRESSURE - 300 PSIG	1	1	1	1
10-7	37005907	SWITCH, PRESSURE - NEMA 1	2	2	2	2
10-7	32061368	SWITCH, PRESSURE - NEMA 1 (TEMPERATURE CONTROL)	2	2	2	2
10-8	32027120	VALVE, MANUAL DRAIN	1			
10-9	32202657	VALVE, BALL - SERVICE	1			1
10-10	32188542	ASSEMBLY, TUBE - COMPRESSOR/120 GALLON RECEIVER	1			
10-10	32190480	ASSEMBLY, TUBE - COMPRESSOR/240 GALLON RECEIVER	1			
10-11	32252470	BELTGUARD - COMPLETE (FOR UNITS WITHOUT AFTERCOOLER)*	1			
10-12	32170797	VALVE, AUXILIARY - DUAL CONTROL - 175 PSIG	1			
10-12	32170789	VALVE, AUXILIARY - DUAL CONTROL - 125 PSIG (TEMPERATURE CONTROL)	1			
10-13	32233454	ASSEMBLY, TUBE - AUXILIARY VALVE/UNLOADER	1			
10-14	32223604	VALVE, BALL - 1"	2			2
NI	32174286	VALVE, RELIEF - 325 PSIG - DISCHARGE	1		1	1
OPTIONAL EQUIPMENT						
10-15	REF.	AFTERCOOLER, AIR COOLED (SEE FIGURE 11)	1			
10-16	32310690	VALVE, AUTOMATIC DRAIN	1			

* FOR UNITS WITH AFTERCOOLER, SEE FIGURE 11.

FIGURE 11. TYPICAL AIR COOLED AFTERCOOLER.



REF. NO.	PART NO.	DESCRIPTION	QTY.			
			BASE PLATE	120 GAL. SIMPLEX	240 GAL. SIMPLEX	240 GAL. DUPLEX
11-1	32250508	BACK, BELTGUARD	1	-	1	2
11-1	32499022	BACK, BELTGUARD	-	1	-	-
11-2	32000705	SCREW, TAPPING - 3/8-16 X 3/4"	4	4	4	8
11-3	32250060	COVER, BELTGUARD	1	-	1	2
11-3	32499055	COVER, BELTGUARD	-	1	-	-
11-4	32187056	SCREW, SELF-DRILLING - 1/4"	21	21	21	42
11-5	32245037	COIL, AIR COOLED AFTERCOOLER	1	1	1	2
11-6	97170849	SCREW, SELF-TAPPING - 5/16 X 3/4"	4	4	4	8
11-7	32252462	SUPPORT, BELTGUARD	1	-	1	2
11-7	32499030	SUPPORT, BELTGUARD	-	1	-	-
11-8	32250334	COVER, AIR COOLED AFTERCOOLER	1	-	1	2
11-8	32499063	COVER, AIR COOLED AFTERCOOLER	-	1	-	-
11-9	32136939	NUT, SPEED	2	2	2	4
11-10	32164634	CAPSCREW, SERRATED - 5/16 X 3/4"	2	2	2	4
11-11	95229183	ELBOW, TUBE - 1 X 1"	2	2	2	2
11-12	32145096	ELBOW, TUBE - 1 X 1"	1	1	1	2
11-13	32188559	ASSEMBLY, TUBE - COMPRESSOR/AIR COOLED AFTERCOOLER	1	1	1	2
11-14	95229308	CONNECTOR, MALE - 1 X 1"	-	1	1	4
11-15	32252884	ASSEMBLY, TUBE - AIR COOLED AFTERCOOLER/RECEIVER	-	1	-	-
11-15	32252876	ASSEMBLY, TUBE - AIR COOLED AFTERCOOLER/RECEIVER	-	-	1	-
11-15	32252868	ASSEMBLY, TUBE - AIR COOLED AFTERCOOLER/RECEIVER	-	-	-	2
11-16	32215774	PLUG - 1-1/4" SQUARE COUNTERSUNK	-	1	1	-
11-17	30218382	SILENCER, NOISE	-	1	1	-
11-18	32174286	VALVE, RELIEF - DISCHARGE - 325 PSIG	1	1	1	1

COMPRESSOR LUBRICANT

PART NO.	DESCRIPTION
32318875	LUBRICANT, ALL SEASON T30 SELECT™ SYNTHETIC LUBRICANT (QT.)
32318883	LUBRICANT, ALL SEASON T30 SELECT™ SYNTHETIC (12 QT. CASE)

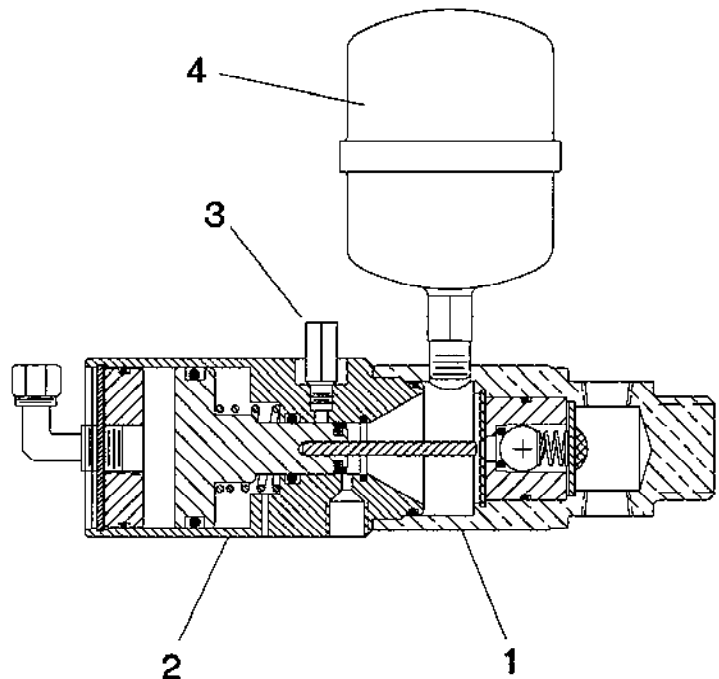
STEP SAVER KITS

PART NO.	DESCRIPTION
32127482	KIT, FILTER/SILENCER
32229379	KIT, VALVE/GASKET
32194003	KIT, RING/GASKET
32127516	KIT, BEARING/CONNECTING ROD
32229387	KIT, GASKET
32212649	KIT, DECAL
32319493	KIT, OVERHAUL

AUTOMATIC DRAIN VALVE KITS & REPLACEMENT PARTS

REF. NO.	PART NO.	DESCRIPTION
12-1	32310971	KIT, WATER CAP ASSEMBLY
12-2	32310989	KIT, BODY/PISTON ASSEMBLY
12-3	32310997	KIT, ONE WAY VALVE
12-4	32496309	RESERVOIR, LARGE (FOR DUPLEX MODELS)
12-4	32496317	RESERVOIR, SMALL (FOR SIMPLEX MODELS)

FIGURE 12. TYPICAL AUTOMATIC DRAIN VALVE (CUTAWAY VIEW).





A series of horizontal lines for writing, spanning the width of the page. The lines are evenly spaced and extend from the left margin to the right margin.

LOOK WHAT INGERSOLL-RAND CAN DO FOR YOU!



Efficient Field Service

We maintain a highly trained staff of technicians to service your equipment for preventive maintenance, or to assist you should emergencies ever occur.



Complete Repair Service

Our trained technicians will repair or overhaul your equipment to factory specifications, using only genuine I-R parts.



Special Engineering Service

We can help you identify and solve your problems by evaluating your needs and recommending the proper equipment to give you maximum efficiency.



Spare Parts

By stocking genuine I-R spare parts, we can help you avoid costly delays or substituting inferior parts. Using genuine I-R parts on your I-R equipment will help to keep even older equipment running in good-as-new condition.



Complete Stock of Equipment

We carry a complete line of I-R equipment and accessories designed to meet any compressed air application. We are backed by I-R's prompt factory shipment to ensure you on-time delivery.

A SUBSTITUTE IS NOT A REPLACEMENT!

Ensure you get peak performance and longevity out of your Ingersoll-Rand product by insisting on genuine Ingersoll-Rand replacement parts and maintenance kits. Not only are the replacement parts made to precise dimensions and OEM-specified metallurgy, but each part is backed by the Ingersoll-Rand warranty. Your local Air Center, Distributor, or direct Ingersoll-Rand salesperson will work with you to ensure you get the parts you need to do the job right. Equip your machines with only the best — Ingersoll-Rand genuine parts.

NOTE: THE USE OF REPAIR PARTS OTHER THAN THOSE INCLUDED WITHIN THE INGERSOLL-RAND COMPANY APPROVED PARTS LIST MAY CREATE UNSAFE CONDITIONS OR MECHANICAL FAILURES OVER WHICH INGERSOLL-RAND COMPANY HAS NO CONTROL. INGERSOLL-RAND COMPANY SHALL BEAR NO RESPONSIBILITY FOR EQUIPMENT ON WHICH NON-APPROVED REPAIR PARTS ARE INSTALLED.

The manufacturer reserves the right to make changes or add improvements without notice and without incurring any obligation to make such changes to products previously sold.